

GOODSON | ENGINEERING
CONSULTING ENGINEERS



Engineering Excellence



Constructing a Partnership Built on Trust

Intensive investigation, accurate analysis and scientific clarity are essential to successful forensic engineering — and since we first opened our doors in 1984, we've built a solid reputation based on these qualities.

Goodson Engineering is respected throughout the industry for our highly experienced engineers, insightful electrical, mechanical and material analysis, superior research and testing, and extensive lab services. We provide premier engineering services in a cost-effective manner to leading companies across the U.S. and beyond, and our engineers hold licenses in multiple states. Our turnkey research and analysis services include on-site and lab inspections, as well as evidence storage.

Our state-of-the-art lab and well-equipped, spacious warehouse are home to scientifically advanced technology, and we provide secure storage locations for sensitive evidence. We have special skills designing fire protection systems and working within code compliance, as well as assisting companies in the evaluation and assessment of their products veracity and reliability relating to regulatory standards.

We're committed to discovering accurate scientific explanations behind each incident we investigate. Whether we're assisting corporations, manufacturing companies, governmental agencies, insurance companies or attorneys, our clients can be assured they will receive trustworthy, unbiased results with a scientific foundation. You can trust our engineers to provide exceptional customer service, technically accurate reports and analysis, and honest objectivity for any project in the lab and in court. We look forward to building a successful partnership and delivering exceptional results for your organization.

Expect results. Expect engineering excellence.

For more information, visit our website at www.goodsonengineering.com — and contact us today at 940.243.1324 for full analysis, design and technical consulting services.

Investigating History. Engineering for the Future.

Engineers are curious people, by design. Our desire to solve problems is the drive that challenges us to seek answers, the voice that pushes us to prove results, and the hunger that's never satisfied until we find the truth. It's also what led Mark Goodson to create Goodson Engineering more than 25 years ago. Inspired by Locard's principle, "Every touch leaves a trace," Mark built a team of engineers dedicated to finding answers to the complex questions of forensic engineering. With a caseload that includes fire and electrical incidents, mechanical, material and structural failures, explosions, accidents, and more, we've been searching for answers — and finding them — ever since.

In 1997, we purchased our first building. Sheryl Goodson joined the company in 1998 heading up client service and daily operations. We hired our first engineer in 1999, and opened our new facility in 2004. Goodson Engineering is now staffed with Professional Engineers (PE) with specialties in electrical engineering, mechanical engineering, and fire protection engineering, as well as a degreed engineer as our lab manager. Founder Mark Goodson continues to personally train and oversee all engineers, ensuring a consistently high level of customer service.

Our clients, many of whom represent Fortune 500 companies, rely on Goodson Engineering for accuracy, expertise and objectivity. Years of experience and in-depth training have taught us not only how to ask the right questions, but also how to go the extra mile to find the right answers. Through research, analysis, advanced technology, and continuous education, Goodson Engineering has earned a reputation as a leader in our field. We're proud of our history, and we look forward to many more years bringing insightful engineering to our clients.



A Solid Foundation

Foundation

A company is only as strong as its people — and ours are truly exceptional.

Led by Mark Goodson, our electrical and mechanical engineering team includes recognized leaders in forensic engineering and expert witness testimony. We seek the most talented engineers in our industry for Goodson Engineering, and our clients reap the benefits. Our hand-picked engineers are selected based on trusted referrals and strong past performance. The Goodson team includes experts in fire origination and protection, electrical and mechanical failures, vehicular accidents and explosions.

Mark works as a consultant for numerous agencies in the public sector, including police departments, district attorneys' offices, morgues, prisons and crime labs. A pioneer in electrical death and injury analysis, carbon monoxide death analysis and mechanical fire causation, his work has been published many times in industry journals, including *Fire & Arson Investigator*, *Journal of Forensic Sciences*, and the *American Journal of Forensic Medicine and Pathology*. As a Fellow at the American Academy of Forensic Sciences (AAFS), Mark speaks regularly at AAFS conferences and other industry meetings. He believes continuing education is necessary to stay abreast of new developments in engineering, and works to ensure the Goodson Engineering team is always a step ahead of the curve. He holds one patent, with others pending.



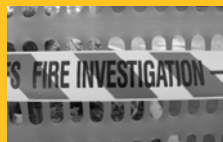
Experience Meets Technology

Technology

Exceptional engineers create great results — especially when they have the right tools to do the job.

Goodson Engineering gives its clients the best of both worlds, pairing highly skilled engineers with a state-of-the-art lab. The comprehensive 25,000 square-foot testing center is our base of operations for research and analysis, providing high-end support for our engineers' technical expertise. Equipment in our lab is updated continually with the latest cutting-edge technology. Our lab is home to a Hitachi S3000N scanning electron microscope (SEM) and two real-time x-ray machines, one of which provides the ability to view large-scale, heavy objects and industrial equipment. The lab also features a Fourier Transform Infrared Analyzer (FTIR), which is a great complement to the SEM, allowing enhanced analysis for plastics and wiring insulation. Additional lab components include a Leica Microscope, borescope, and thermal imaging equipment. By housing all these resources under one roof, we can perform most services ourselves, with very little outsourcing — which gives us greater quality control.

Our facility allows us to provide customers with better service by accommodating larger inspections, simultaneous same-day services, and third-party inspections. Goodson Engineering also provides secure on-site evidence storage, equipped with a sprinkler system for fire protection, to meet our clients' needs.



Our Services

- Mechanical Analysis
- Material Analysis
- Research and Testing
- Fire Protection
- Electrical Analysis
- Evidence Storage
- Lab Services
- Code Compliance

GOODSON || ENGINEERING
CONSULTING ENGINEERS

1500 Spencer Road, Denton, Texas 76205 • Phone 940.243.1324 • Fax 940.387.1766
www.goodsonengineering.com